



Compressor
Voltage Code : XC

FH4518Y-XC

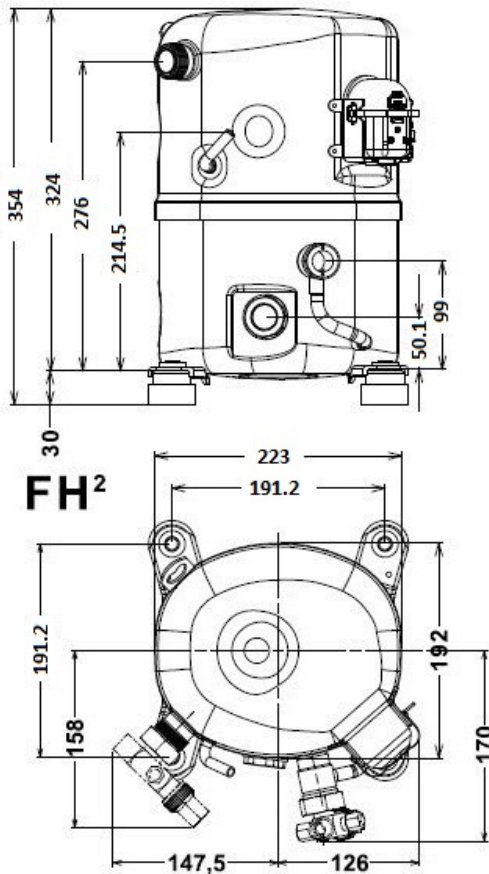
High Temp. Commercial (HP)

220 - 240V 1~ 50 Hz

R134a

FH4518Y-XC3A

Operating conditions :	Customized... / 50 Hz / Dew	Sound Power ISO3745 / ISO 3743-1
Evaporating Temp. : 0.00 °C Superheat : 6.50 K Return gas temp. : 0.00 °C Condensing Temp. : 45.0 °C Subcooling : 20.2 K Liquid : 24.5 °C	Refrig. Capacity : 4053 Watt Power Input : 1210 Watt Amps : 5.62 A C.O.P : 3.35 Watt/W	70 dBA



Displacement (cc)	48,5
Net Weight (Kg)	30.0
Oil Quantity (cc)	1140.0
Oil Type	Polyolester
Expansion Device	Capillary_Tube/Expansion_Valve
Cooling	Fan
Main Winding (Ohm)	1.95
Start Winding (Ohm)	5.51
Current	
RLA (A)	6.75
MCC (A)	10.7
LRA (A)	40
Electrical Equipment	CSR
Overload	Interne
Start Capacitor	88 µF / 330 V
Run Capacitor	35 µF / 400 V
Potential Relay	RVA4G**
Pick Up	180/195V
Drop Out	40/105V
Refrigerating connection for	
Suction Tube	15.9 (5/8")
Discharge Tube	12.7 (1/2")
Process Tube	6.35 (1/4")

Certificates :



Note : Tecumseh reserves the right to change information contained in this document without notification.



Tecumseh

FH4518Y-XC	Tension XC : 220 - 240V 1~ 50 Hz
-------------------	---

Les performances sont données dans les **conditions EN12900** :
 Condition Dew
 The performance data are in **EN12900 conditions** :
 Dew Condition

Gaz aspirés : 20.0 °C
 Sous refroidissement : 0.0 K
 Return gas : 20.0 °C
 Subcooling : 0.0 K

© 2023 Tecumseh Products Company
 All rights reserved

50 Hz R134a

N°User-353

4 T condensation	5 T évaporation	(°C)	-25	-20	-15	-10	-5	0	5	10	15
30	1 P frigorifique	(Watt)	1059	1523	2090	2778	3604	4584	5735	7074	8618
	2 P absorbée	(W)	604	704	793	875	952	1029	1109	1196	1293
	3 I absorbée	(A)	2.92	3.38	3.82	4.22	4.60	4.94	5.26	5.55	5.81
40	1 P frigorifique	(Watt)	777	1193	1687	2277	2979	3810	4787	5928	7248
	2 P absorbée	(W)	579	716	839	949	1051	1149	1246	1345	1450
	3 I absorbée	(A)	2.72	3.31	3.88	4.41	4.92	5.40	5.85	6.27	6.66
50	1 P frigorifique	(Watt)		892	1332	1843	2441	3143	3966	4927	6043
	2 P absorbée	(W)		685	851	1002	1140	1269	1393	1515	1640
	3 I absorbée	(A)		3.22	3.91	4.58	5.22	5.83	6.41	6.96	7.49
60	1 P frigorifique	(Watt)			1006	1457	1971	2564	3252	4054	4985
	2 P absorbée	(W)			819	1020	1204	1376	1538	1695	1850
	3 I absorbée	(A)			3.93	4.73	5.50	6.24	6.95	7.64	8.29

1 = cooling capacity 2 = power input 3 = current 4 = condensing temperature 5 = evaporating temperature

Nota : Tecumseh se réserve le droit de modifier les informations contenues dans ce document sans préavis.

Note : Tecumseh reserves the right to change information contained in this document without notification.