



Tecumseh

Compressor
Voltage Code : TZ

TAG2519Z

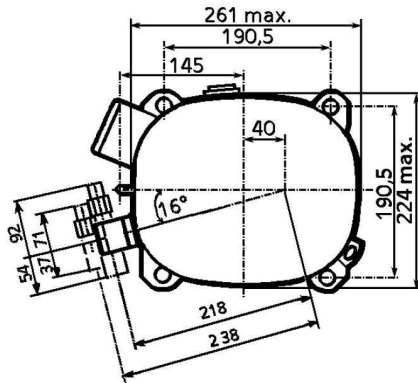
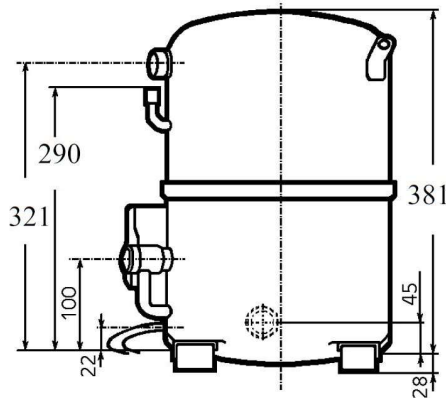
Low Temp. Commercial (BP)

400V 3~ 50Hz / 440V 3~ 60 Hz

R449A

AG2516Z-TZ1C

Operating conditions : Customized... / 50 Hz / Mid		Sound Power ISO3745 / ISO 3743-1
Evaporating Temp. : -25.0 °C Superheat : 5.20 K Return gas temp. : -18.0 °C Condensing Temp. : 45.0 °C Subcooling : 22.5 K Liquid : 20.3 °C	Refrig. Capacity : 4263 Watt Power Input : 2546 Watt Amps : 4.76 A C.O.P. : 1.67 Watt/W	79 dBA



Displacement (cc)	124,4
Net Weight (Kg)	46.2
Oil Quantity (cc)	1760.0
Oil Type	Polyolester
Expansion Device	Capillary_Tube/Expansion_Valve
Cooling	Fan
Main Winding (Ohm)	3.7
Current	
RLA (A)	4.6 4.8
MCC (A)	10.4 10.3
LRA (A)	44 47
Electrical Equipment	TRI
Overload	Interne
Refrigerating connection for	
Suction Tube	28.6 (1"1/8)
Discharge Tube	15.9 (5/8")
Process Tube	6.35 (1/4")

Certificates :



Note : Tecumseh reserves the right to change information contained in this document without notification.



TAG2519Z

Tension TZ : 400V 3~ 50Hz / 440V 3~ 60 Hz

Les performances sont données dans les **conditions EN12900** :
Condition Mid

Gaz aspirés : 20.0 °C
Sous refroidissement : 0.0 K

The performance data are in **EN12900 conditions** :
Mid Condition

Return gas : 20.0 °C
Subcooling : 0.0 K

50 Hz R449A (*)

N°2695

4 T condensation	5 T évaporation	(°C)	-35	-30	-25	-20	-15	-10
30	1 P frigorifique	(Watt)	2674	3875	5372	7200	9394	11988
	2 P absorbée	(W)	1895	2283	2693	3130	3597	4098
	3 I absorbée	(A)	3.83	4.33	4.89	5.49	6.14	6.81
40	1 P frigorifique	(Watt)	1977	2984	4249	5806	7689	9935
	2 P absorbée	(W)	1835	2263	2713	3189	3694	4232
	3 I absorbée	(A)	3.79	4.36	4.98	5.64	6.34	7.07
50	1 P frigorifique	(Watt)	1354	2179	3222	4518	6103	8011
	2 P absorbée	(W)	1707	2184	2681	3204	3754	4337
	3 I absorbée	(A)	3.64	4.28	4.97	5.71	6.48	7.28
60	1 P frigorifique	(Watt)			2329	3376	4673	6254
	2 P absorbée	(W)			2580	3156	3760	4394
	3 I absorbée	(A)			4.82	5.63	6.48	7.36

60 Hz R449A (*)

N°2695

4 T condensation	5 T évaporation	(°C)	-35	-30	-25	-20	-15	-10
30	1 P frigorifique	(Watt)	3249	4627	6315	8346	10758	13583
	2 P absorbée	(W)	2328	2789	3273	3786	4336	4931
	3 I absorbée	(A)	3.67	4.12	4.67	5.30	6.01	6.79
40	1 P frigorifique	(Watt)	2404	3566	4998	6734	8810	11260
	2 P absorbée	(W)	2254	2766	3298	3858	4453	5092
	3 I absorbée	(A)	3.59	4.13	4.74	5.44	6.21	7.05
50	1 P frigorifique	(Watt)	1648	2605	3792	5244	6996	9083
	2 P absorbée	(W)	2098	2669	3259	3876	4526	5218
	3 I absorbée	(A)	3.46	4.09	4.79	5.56	6.40	7.30
60	1 P frigorifique	(Watt)			2743	3921	5361	7096
	2 P absorbée	(W)			3137	3819	4534	5288
	3 I absorbée	(A)			4.80	5.66	6.58	7.56

1 = cooling capacity 2 = power input 3 = current 4 = condensing temperature 5 = evaporating temperature

(*) Veuillez vous référer strictement aux Recommandations d'Utilisation et Bulletins Marketing Tecumseh du fait de la température de refoulement élevée pour les applications LBP.

(*) Due to very high discharge temperature especially on LBP conditions, please strictly refer to Tecumseh Guidelines & Marketing Bulletin when using this refrigerant.

Nota : Tecumseh se réserve le droit de modifier les informations contenues dans ce document sans préavis.

Note : Tecumseh reserves the right to change information contained in this document without notification.

© 2022 Tecumseh Products Company
All rights reserved