



Compressor
Voltage Code : XC

FH2511Z-XC

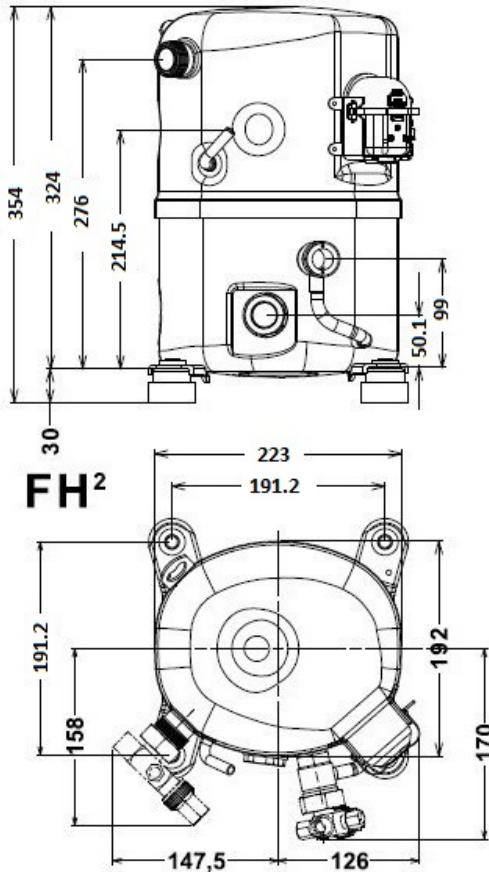
Low Temp. Commercial (BP)

220 - 240V 1~ 50 Hz

R449A

FH2511Z-XC3A

Operating conditions :	Customized... / 50 Hz / Mid	Sound Power ISO3745 / ISO 3743-1
Evaporating Temp. : -25.0 °C Superheat : 6.50 K Return gas temp. : -22.9 °C Condensing Temp. : 45.0 °C Subcooling : 20.5 K Liquid : 24.5 °C	Refrig. Capacity : 3331 Watt Power Input : 1973 Watt Amps : 7.97 A C.O.P : 1.69 Watt/W	75 dBA



Displacement (cc)	68
Net Weight (Kg)	34.0
Oil Quantity (cc)	1140.0
Oil Type	Polyolester
Expansion Device	Capillary_Tube/Expansion_Valve
Cooling	Fan
Main Winding (Ohm)	0.75
Start Winding (Ohm)	2.02
Current	
RLA (A)	11
MCC (A)	24
LRA (A)	71
Electrical Equipment	CSR
Overload	Interne
Start Capacitor	161 µF / 330 V
Run Capacitor	60 µF / 400 V
Potential Relay	RVA3AH**
Pick Up	190/215V
Drop Out	40/105V
Refrigerating connection for	
Suction Tube	15.9 (5/8")
Discharge Tube	12.7 (1/2")
Process Tube	6.35 (1/4")

Certificates :



Note : Tecumseh reserves the right to change information contained in this document without notification.



Tecumseh

FH2511Z-XC	Tension XC : 220 - 240V 1~ 50 Hz
-------------------	---

Les performances sont données dans les conditions EN12900 :	Gaz aspirés :	20.0 °C
Condition Mid	Sous refroidissement :	0.0 K
The performance data are in EN12900 conditions :	Return gas :	20.0 °C
Mid Condition	Subcooling :	0.0 K

50 Hz R449A (*)

N°User-199

4 T condensation	5 T évaporation	(°C)	-35	-30	-25	-20	-15	-10
30	1 P frigorifique	(Watt)	2117	3018	4123	5457	7044	8909
	2 P absorbée	(W)	1476	1761	2041	2310	2561	2789
	3 I absorbée	(A)	7.03	7.53	8.06	8.63	9.23	9.88
40	1 P frigorifique	(Watt)	1552	2349	3328	4514	5932	7607
	2 P absorbée	(W)	1408	1752	2100	2445	2783	3106
	3 I absorbée	(A)	6.86	7.53	8.23	8.97	9.73	10.5
50	1 P frigorifique	(Watt)	997	1684	2531	3564	4808	6286
	2 P absorbée	(W)	1261	1663	2078	2500	2923	3341
	3 I absorbée	(A)	6.44	7.29	8.17	9.07	10.0	11.0
60	1 P frigorifique	(Watt)			1759	2633	3696	4973
	2 P absorbée	(W)			1968	2466	2975	3486
	3 I absorbée	(A)			7.84	8.93	10.0	11.2

© 2023 Tecumseh Products Company
All rights reserved

1 = cooling capacity 2 = power input 3 = current 4 = condensing temperature 5 = evaporating temperature

(*) Veuillez vous référer strictement aux Recommandations d'Utilisation et Bulletins Marketing Tecumseh du fait de la température de refoulement élevée pour les applications LBP.

(*) Due to very high discharge temperature especially on LBP conditions, please strictly refer to Tecumseh Guidelines & Marketing Bulletin when using this refrigerant.

Nota : Tecumseh se réserve le droit de modifier les informations contenues dans ce document sans préavis.

Note : Tecumseh reserves the right to change information contained in this document without notification.