



Tecumseh

Compressor Voltage Code : XG

FH2511Z-XG

Low Temp. Commercial (BP)

380-420V 3~ 50Hz / 460V 3~ 60 Hz

R449A

FH2511Z-XG1A

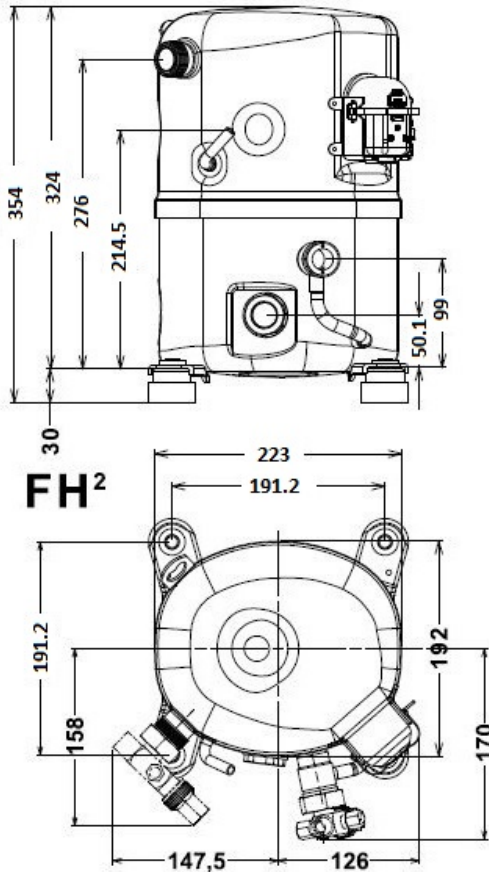
Operating conditions : **Customized... / 50 Hz / Mid**

Sound Power
ISO3745 / ISO 3743-1

Evaporating Temp. : -25.0 °C
Superheat : 6.50 K
Return gas temp. : -22.9 °C
Condensing Temp. : 45.0 °C
Subcooling : 16.0 K
Liquid : 24.5 °C

Refrig. Capacity : **2906 Watt**
Power Input : 1848 Watt
Amps : 3.38 A
C.O.P : 1.57 Watt/W

74 dBA



Displacement (cc)	68
Net Weight (Kg)	31.0
Oil Quantity (cc)	1140.0
Oil Type	Polyolester
Expansion Device	Capillary_Tube/Expansion_Valve
Cooling	Fan
Main Winding (Ohm)	3.8
Current	
RLA (A)	4.2 4
MCC (A)	8.3
LRA (A)	60
Electrical Equipment	TRI
Overload	Interne
Refrigerating connection for	
Suction Tube	15.9 (5/8")
Discharge Tube	12.7 (1/2")
Process Tube	6.35 (1/4")

Certificates :



Note : Tecumseh reserves the right to change information contained in this document without notification.



Tecumseh

FH2511Z-XG	Tension XG : 380-420V 3~ 50Hz / 460V 3~ 60 Hz
-------------------	--

Les performances sont données dans les conditions EN12900 :	Gaz aspirés :	20.0 °C
Condition Mid	Sous refroidissement :	0.0 K
The performance data are in EN12900 conditions :	Return gas :	20.0 °C
Mid Condition	Subcooling :	0.0 K

50 Hz R449A (*)								
N°User-219								
4 T condensation	5 T évaporation	(°C)	-35	-30	-25	-20	-15	-10
30	1 P frigorifique	(Watt)	1931	2753	3760	4977	6424	8125
	2 P absorbée	(W)	1382	1649	1911	2163	2399	2612
	3 I absorbée	(A)	2.97	3.19	3.41	3.65	3.91	4.18
40	1 P frigorifique	(Watt)	1416	2142	3035	4117	5410	6938
	2 P absorbée	(W)	1319	1641	1966	2290	2606	2908
	3 I absorbée	(A)	2.90	3.19	3.49	3.80	4.12	4.46
50	1 P frigorifique	(Watt)	909	1535	2308	3250	4385	5733
	2 P absorbée	(W)	1181	1557	1946	2342	2738	3129
	3 I absorbée	(A)	2.73	3.09	3.46	3.84	4.24	4.65
60	1 P frigorifique	(Watt)			1604	2401	3371	4536
	2 P absorbée	(W)			1843	2310	2786	3265
	3 I absorbée	(A)			3.32	3.78	4.25	4.74

60 Hz R449A (*)								
N°User-219								
4 T condensation	5 T évaporation	(°C)	-35	-30	-25	-20	-15	-10
30	1 P frigorifique	(Watt)	2134	3042	4156	5500	7100	8980
	2 P absorbée	(W)	1504	1794	2080	2354	2610	2842
	3 I absorbée	(A)	2.65	2.84	3.04	3.26	3.48	3.73
40	1 P frigorifique	(Watt)	1565	2368	3355	4550	5980	7668
	2 P absorbée	(W)	1435	1785	2140	2492	2836	3165
	3 I absorbée	(A)	2.59	2.84	3.11	3.38	3.67	3.97
50	1 P frigorifique	(Watt)	1005	1697	2551	3593	4846	6337
	2 P absorbée	(W)	1285	1695	2118	2548	2979	3405
	3 I absorbée	(A)	2.43	2.75	3.08	3.42	3.78	4.14
60	1 P frigorifique	(Watt)			1773	2654	3726	5013
	2 P absorbée	(W)			2006	2513	3031	3553
	3 I absorbée	(A)			2.96	3.37	3.79	4.22

1 = cooling capacity 2 = power input 3 = current 4 = condensing temperature 5 = evaporating temperature

(*) Veuillez vous référer strictement aux Recommandations d'Utilisation et Bulletins Marketing Tecumseh du fait de la température de reflux élevée pour les applications LBP.
 (*) Due to very high discharge temperature especially on LBP conditions, please strictly refer to Tecumseh Guidelines & Marketing Bulletin when using this refrigerant.

Nota : Tecumseh se réserve le droit de modifier les informations contenues dans ce document sans préavis.

Note : Tecumseh reserves the right to change information contained in this document without notification.

© 2023 Tecumseh Products Company
All rights reserved