



Compressor
Voltage Code : XG

FH4518Y-XG

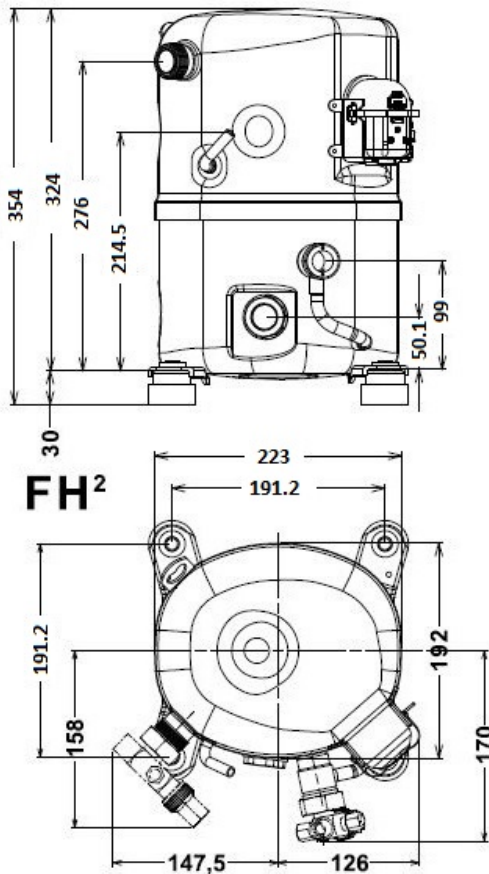
High Temp. Commercial (HP)

380-420V 3~ 50Hz / 460V 3~ 60 Hz

R134a

FH4518Y-XG1A

Operating conditions :	Customized... / 50 Hz / Dew	Sound Power ISO3745 / ISO 3743-1
Evaporating Temp. : 0.00 °C Superheat : 6.50 K Return gas temp. : 0.00 °C Condensing Temp. : 45.0 °C Subcooling : 16.0 K Liquid : 24.5 °C	Refrig. Capacity : 3800 Watt Power Input : 1168 Watt Amps : 2.07 A C.O.P : 3.25 Watt/W	69 dBA



Displacement (cc)	48,5
Net Weight (Kg)	29.0
Oil Quantity (cc)	1140.0
Oil Type	Polyolester
Expansion Device	Capillary_Tube/Expansion_Valve
Cooling	Fan
Main Winding (Ohm)	10.25
Current	
RLA (A)	2.5 2.5
MCC (A)	4.9
LRA (A)	18
Electrical Equipment	TRI
Overload	Interne
Refrigerating connection for	
Suction Tube	15.9 (5/8")
Discharge Tube	12.7 (1/2")
Process Tube	6.35 (1/4")

Certificates :



Note : Tecumseh reserves the right to change information contained in this document without notification.



Tecumseh

FH4518Y-XG	Tension XG : 380-420V 3~ 50Hz / 460V 3~ 60 Hz
-------------------	--

Les performances sont données dans les conditions EN12900 :	Gaz aspirés :	20.0 °C
Condition Dew	Sous refroidissement :	0.0 K
The performance data are in EN12900 conditions :	Return gas :	20.0 °C
Dew Condition	Subcooling :	0.0 K

50 Hz R134a											
											N°User-357
4 T condensation	5 T évaporation	(°C)	-25	-20	-15	-10	-5	0	5	10	15
30	1 P frigorifique	(Watt)	1041	1498	2054	2725	3526	4475	5586	6876	8360
	2 P absorbée	(W)	582	683	773	853	925	990	1049	1102	1153
	3 I absorbée	(A)	1.13	1.27	1.37	1.46	1.53	1.57	1.59	1.59	1.56
40	1 P frigorifique	(Watt)	758	1165	1648	2222	2904	3709	4654	5754	7024
	2 P absorbée	(W)	551	681	801	912	1016	1115	1208	1298	1385
	3 I absorbée	(A)	1.06	1.28	1.47	1.65	1.80	1.93	2.03	2.12	2.18
50	1 P frigorifique	(Watt)		870	1297	1793	2374	3054	3851	4779	5855
	2 P absorbée	(W)		665	814	955	1090	1220	1347	1471	1594
	3 I absorbée	(A)		1.19	1.47	1.73	1.97	2.18	2.37	2.54	2.69
60	1 P frigorifique	(Watt)			987	1423	1920	2494	3161	3935	4835
	2 P absorbée	(W)			833	1002	1166	1327	1485	1643	1800
	3 I absorbée	(A)			1.36	1.71	2.03	2.33	2.61	2.87	3.10

60 Hz R134a											
											N°User-357
4 T condensation	5 T évaporation	(°C)	-25	-20	-15	-10	-5	0	5	10	15
30	1 P frigorifique	(Watt)	1234	1815	2494	3288	4215	5293	6538	7968	9601
	2 P absorbée	(W)	715	825	925	1016	1101	1181	1259	1336	1414
	3 I absorbée	(A)	1.08	1.25	1.41	1.56	1.70	1.83	1.95	2.05	2.15
40	1 P frigorifique	(Watt)	836	1377	1997	2711	3539	4497	5603	6875	8329
	2 P absorbée	(W)	691	839	975	1101	1220	1333	1443	1550	1658
	3 I absorbée	(A)	1.01	1.23	1.43	1.63	1.82	2.00	2.16	2.32	2.47
50	1 P frigorifique	(Watt)		962	1521	2156	2884	3722	4689	5800	7075
	2 P absorbée	(W)		805	985	1155	1315	1469	1618	1763	1908
	3 I absorbée	(A)		1.19	1.45	1.70	1.93	2.16	2.37	2.58	2.77
60	1 P frigorifique	(Watt)			1091	1646	2273	2991	3817	4768	5862
	2 P absorbée	(W)			949	1169	1379	1581	1777	1968	2158
	3 I absorbée	(A)			1.45	1.75	2.03	2.31	2.57	2.83	3.07

1 = cooling capacity 2 = power input 3 = current 4 = condensing temperature 5 = evaporating temperature

Nota : Tecumseh se réserve le droit de modifier les informations contenues dans ce document sans préavis.

Note : Tecumseh reserves the right to change information contained in this document without notification.

© 2023 Tecumseh Products Company
All rights reserved