



Compressor
Voltage Code : XC

FH4525Y-XC

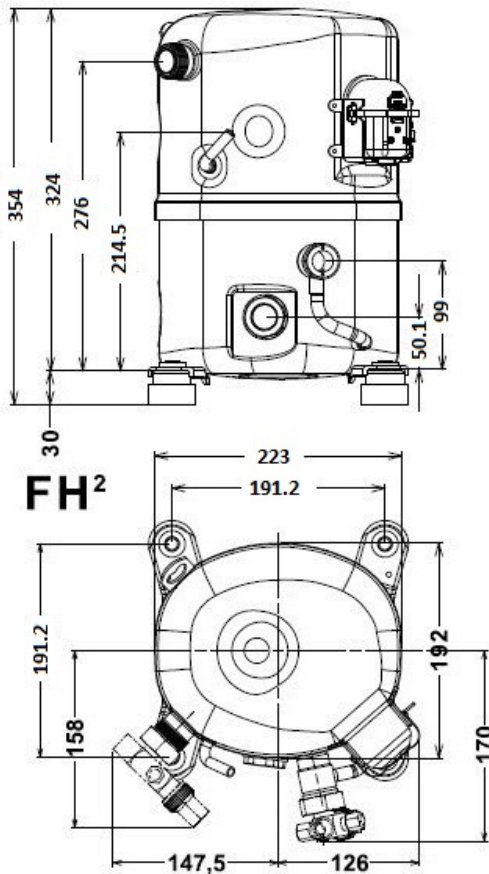
High Temp. Commercial (HP)

220 - 240V 1~ 50 Hz

R134a

FH4525Y-XC3A

Operating conditions :	Customized... / 50 Hz / Dew	Sound Power ISO3745 / ISO 3743-1
Evaporating Temp. : 0.00 °C Superheat : 6.50 K Return gas temp. : 0.00 °C Condensing Temp. : 45.0 °C Subcooling : 16.0 K Liquid : 24.5 °C	Refrig. Capacity : 5311 Watt Power Input : 1634 Watt Amps : 7.80 A C.O.P : 3.25 Watt/W	70 dBA



Displacement (cc)	63
Net Weight (Kg)	30.0
Oil Quantity (cc)	1140.0
Oil Type	Polyolester
Expansion Device	Capillary_Tube/Expansion_Valve
Cooling	Fan
Main Winding (Ohm)	1.31
Start Winding (Ohm)	3.8
Current	
RLA (A)	9.5
MCC (A)	14
LRA (A)	52
Electrical Equipment	CSR
Overload	Interne
Start Capacitor	88 µF / 330 V
Run Capacitor	35 µF / 400 V
Potential Relay	RVA4G**
Pick Up	180/195V
Drop Out	40/105V
Refrigerating connection for	
Suction Tube	15.9 (5/8")
Discharge Tube	12.7 (1/2")
Process Tube	6.35 (1/4")

Certificates :



Note : Tecumseh reserves the right to change information contained in this document without notification.



Tecumseh

FH4525Y-XC	Tension XC : 220 - 240V 1~ 50 Hz
-------------------	---

Les performances sont données dans les conditions EN12900 :	Gaz aspirés :	20.0 °C
Condition Dew	Sous refroidissement :	0.0 K
The performance data are in EN12900 conditions :	Return gas :	20.0 °C
Dew Condition	Subcooling :	0.0 K

50 Hz R134a											
											N°User-355
4 T condensation	5 T évaporation	(°C)	-25	-20	-15	-10	-5	0	5	10	15
30	1 P frigorifique	(Watt)	1456	2101	2871	3788	4870	6141	7619	9325	11282
	2 P absorbée	(W)	847	967	1081	1189	1292	1389	1483	1571	1656
	3 I absorbée	(A)	4.05	4.70	5.30	5.86	6.39	6.87	7.31	7.71	8.07
40	1 P frigorifique	(Watt)	1026	1611	2297	3105	4056	5170	6469	7971	9700
	2 P absorbée	(W)	833	986	1135	1280	1420	1557	1692	1823	1951
	3 I absorbée	(A)	3.77	4.60	5.38	6.13	6.83	7.50	8.12	8.71	9.25
50	1 P frigorifique	(Watt)		1164	1771	2477	3301	4265	5389	6693	8200
	2 P absorbée	(W)		966	1155	1341	1525	1707	1888	2067	2245
	3 I absorbée	(A)		4.47	5.44	6.36	7.25	8.10	8.91	9.67	10.4
60	1 P frigorifique	(Watt)			1305	1914	2617	3436	4392	5504	6794
	2 P absorbée	(W)			1144	1378	1611	1843	2075	2307	2540
	3 I absorbée	(A)			5.46	6.57	7.64	8.67	9.66	10.6	11.5

© 2023 Tecumseh Products Company
All rights reserved

1 = cooling capacity 2 = power input 3 = current 4 = condensing temperature 5 = evaporating temperature

Nota : Tecumseh se réserve le droit de modifier les informations contenues dans ce document sans préavis.

Note : Tecumseh reserves the right to change information contained in this document without notification.