



Tecumseh

Compressor
Voltage Code : XG

FH4525Y-XG

High Temp. Commercial (HP)

380-420V 3~ 50Hz / 460V 3~ 60 Hz

R134a

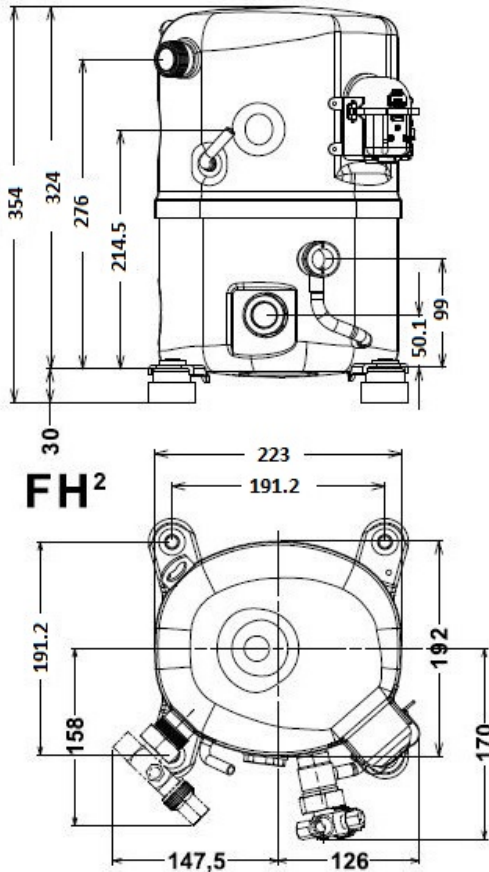
FH4525Y-XG1A

Operating conditions : **Customized... / 50 Hz / Dew**

Sound Power
ISO3745 / ISO 3743-1

Evaporating Temp. : 0.00 °C Superheat : 6.50 K Return gas temp. : 0.00 °C Condensing Temp. : 45.0 °C Subcooling : 16.0 K Liquid : 24.5 °C	Refrig. Capacity : 5158 Watt Power Input : 1578 Watt Amps : 2.83 A C.O.P : 3.27 Watt/W
--	---

71 dBA



Displacement (cc)	63
Net Weight (Kg)	29.0
Oil Quantity (cc)	1140.0
Oil Type	Polyolester
Expansion Device	Capillary_Tube/Expansion_Valve
Cooling	Fan
Main Winding (Ohm)	7.05
Current	
RLA (A)	3.4 3.4
MCC (A)	5.9
LRA (A)	26
Electrical Equipment	TRI
Overload	Interne
Refrigerating connection for	
Suction Tube	15.9 (5/8")
Discharge Tube	12.7 (1/2")
Process Tube	6.35 (1/4")

Certificates :



Note : Tecumseh reserves the right to change information contained in this document without notification.



Tecumseh

FH4525Y-XG	Tension XG : 380-420V 3~ 50Hz / 460V 3~ 60 Hz
-------------------	--

Les performances sont données dans les conditions EN12900 :	Gaz aspirés :	20.0 °C
Condition Dew	Sous refroidissement :	0.0 K
The performance data are in EN12900 conditions :	Return gas :	20.0 °C
Dew Condition	Subcooling :	0.0 K

50 Hz R134a											
											N°User-359
4 T condensation	5 T évaporation	(°C)	-25	-20	-15	-10	-5	0	5	10	15
30	1 P frigorifique	(Watt)	1399	2013	2755	3645	4703	5949	7404	9088	11020
	2 P absorbée	(W)	811	924	1032	1136	1235	1330	1422	1509	1594
	3 I absorbée	(A)	1.47	1.70	1.92	2.13	2.32	2.49	2.65	2.80	2.93
40	1 P frigorifique	(Watt)	1013	1568	2226	3006	3930	5017	6287	7762	9459
	2 P absorbée	(W)	810	954	1094	1232	1368	1502	1634	1764	1893
	3 I absorbée	(A)	1.37	1.67	1.95	2.22	2.48	2.72	2.95	3.16	3.36
50	1 P frigorifique	(Watt)		1151	1732	2412	3209	4144	5238	6510	7980
	2 P absorbée	(W)		945	1121	1297	1473	1648	1824	2000	2177
	3 I absorbée	(A)		1.62	1.97	2.31	2.63	2.94	3.23	3.51	3.77
60	1 P frigorifique	(Watt)			1281	1867	2545	3337	4261	5338	6589
	2 P absorbée	(W)			1119	1336	1555	1776	1999	2225	2453
	3 I absorbée	(A)			1.98	2.38	2.77	3.14	3.50	3.85	4.18

60 Hz R134a											
											N°User-359
4 T condensation	5 T évaporation	(°C)	-25	-20	-15	-10	-5	0	5	10	15
30	1 P frigorifique	(Watt)	1657	2384	3261	4313	5565	7038	8759	10750	13035
	2 P absorbée	(W)	981	1121	1254	1381	1503	1619	1731	1839	1944
	3 I absorbée	(A)	1.47	1.70	1.92	2.13	2.32	2.49	2.65	2.80	2.93
40	1 P frigorifique	(Watt)	1198	1855	2633	3557	4650	5936	7439	9182	11190
	2 P absorbée	(W)	974	1153	1326	1496	1661	1823	1982	2139	2294
	3 I absorbée	(A)	1.37	1.67	1.95	2.22	2.48	2.72	2.95	3.16	3.36
50	1 P frigorifique	(Watt)		1360	2049	2853	3797	4904	6198	7703	9443
	2 P absorbée	(W)		1138	1358	1575	1790	2003	2215	2425	2636
	3 I absorbée	(A)		1.62	1.97	2.31	2.63	2.94	3.23	3.51	3.77
60	1 P frigorifique	(Watt)			1514	2208	3012	3949	5044	6320	7802
	2 P absorbée	(W)			1348	1619	1888	2158	2428	2699	2971
	3 I absorbée	(A)			1.98	2.38	2.77	3.14	3.50	3.85	4.18

1 = cooling capacity 2 = power input 3 = current 4 = condensing temperature 5 = evaporating temperature

Nota : Tecumseh se réserve le droit de modifier les informations contenues dans ce document sans préavis.
Note : Tecumseh reserves the right to change information contained in this document without notification.

© 2023 Tecumseh Products Company
All rights reserved