



Compressor  
Voltage Code : XC

**FH4532Z-XC**

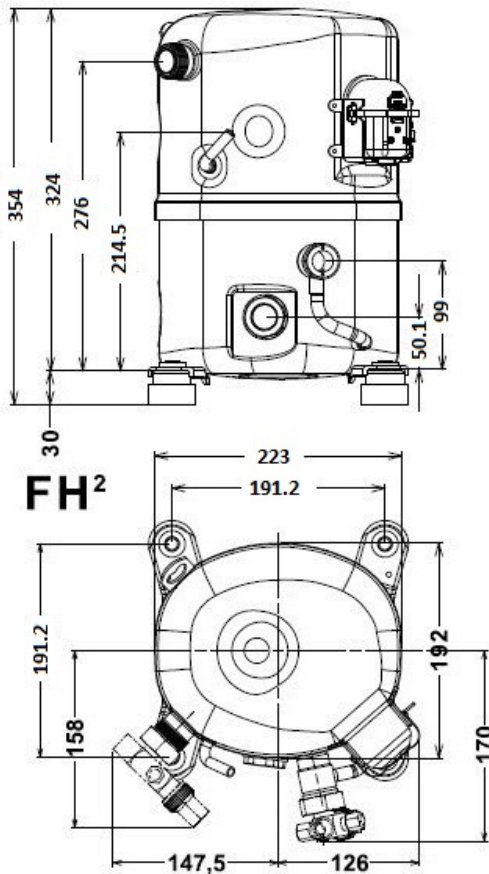
High Temp. Commercial (HP)

220 - 240V 1~ 50 Hz

R404A

**FH4532Z-XC3A**

Operating conditions :	<b>Customized... / 50 Hz / Dew</b>	<b>Sound Power</b> ISO3745 / ISO 3743-1
<b>Evaporating Temp. :</b> 0.00 °C <b>Superheat :</b> 6.50 K <b>Return gas temp. :</b> 0.00 °C <b>Condensing Temp. :</b> 45.0 °C <b>Subcooling :</b> 20.2 K <b>Liquid :</b> 24.5 °C	<b>Refrig. Capacity :</b> 7360 Watt  <b>Power Input :</b> 2261 Watt <b>Amps :</b> 10.4 A <b>C.O.P :</b> 3.26 Watt/W	74 dBA



<b>Displacement (cc)</b>	50,6
<b>Net Weight (Kg)</b>	32.0
<b>Oil Quantity (cc)</b>	1140.0
<b>Oil Type</b>	Polyolester
<b>Expansion Device</b>	Capillary_Tube/Expansion_Valve
<b>Cooling</b>	Fan
<b>Main Winding (Ohm)</b>	0.83
<b>Start Winding (Ohm)</b>	2.52
<b>Current</b>	
RLA (A)	12.2
MCC (A)	21.5
LRA (A)	85
<b>Electrical Equipment</b>	CSR
<b>Overload</b>	Interne
<b>Start Capacitor</b>	125 µF / 330 V
<b>Run Capacitor</b>	50 µF / 400 V
<b>Potential Relay</b>	RVA4G**
Pick Up	180/195V
Drop Out	40/105V
<b>Refrigerating connection for</b>	
Suction Tube	22.2 (7/8")
Discharge Tube	12.7 (1/2")
Process Tube	6.35 (1/4")

Certificates :



Note : Tecumseh reserves the right to change information contained in this document without notification.



**Tecumseh**

<b>FH4532Z-XC</b>	<b>Tension XC : 220 - 240V 1~ 50 Hz</b>
-------------------	---

Les performances sont données dans les <b>conditions EN12900</b> :	Gaz aspirés :	20.0 °C
Condition Dew	Sous refroidissement :	0.0 K
The performance data are in <b>EN12900 conditions</b> :	Return gas :	20.0 °C
Dew Condition	Subcooling :	0.0 K

**50 Hz R404A**

**N°User-209**

4   T condensation	5   T évaporation	(°C)	-25	-20	-15	-10	-5	0	5	10	15
<b>30</b>	1   P frigorifique	(Watt)	2410	3208	4151	5261	6558	8063	9795	11776	14026
	2   P absorbée	(W)	1380	1528	1647	1740	1812	1864	1900	1923	1935
	3   I absorbée	(A)	6.36	7.00	7.51	7.90	8.17	8.31	8.34	8.24	8.02
<b>40</b>	1   P frigorifique	(Watt)	1807	2524	3347	4297	5395	6661	8116	9779	11671
	2   P absorbée	(W)	1389	1597	1773	1919	2040	2138	2215	2275	2321
	3   I absorbée	(A)	6.40	7.32	8.11	8.79	9.34	9.77	10.1	10.3	10.3
<b>50</b>	1   P frigorifique	(Watt)		1854	2561	3355	4258	5289	6470	7819	9358
	2   P absorbée	(W)		1606	1844	2050	2226	2375	2500	2604	2689
	3   I absorbée	(A)		7.34	8.42	9.38	10.2	10.9	11.5	12.0	12.4
<b>60</b>	1   P frigorifique	(Watt)			1790	2433	3144	3945	4855	5895	7085
	2   P absorbée	(W)			1867	2138	2376	2582	2760	2914	3045
	3   I absorbée	(A)			8.43	9.67	10.8	11.8	12.7	13.4	14.1

© 2023 Tecumseh Products Company  
All rights reserved

1 = cooling capacity 2 = power input 3 = current 4 = condensing temperature 5 = evaporating temperature

**Nota : Tecumseh se réserve le droit de modifier les informations contenues dans ce document sans préavis.**

**Note : Tecumseh reserves the right to change information contained in this document without notification.**