



Compressor  
Voltage Code : XG

# FH4538Z-XG

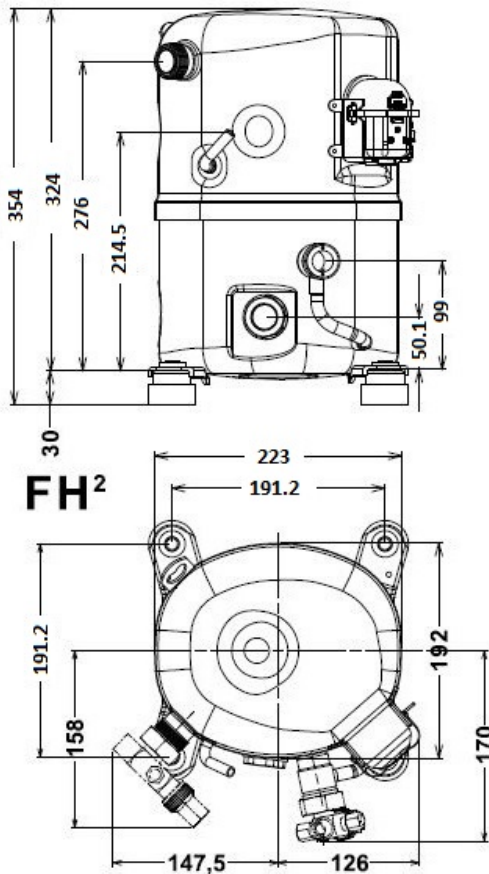
High Temp. Commercial (HP)

380-420V 3~ 50Hz / 460V 3~ 60 Hz

R404A

FH4538Z-XG1A

Operating conditions : <b>Customized... / 50 Hz / Dew</b>		<b>Sound Power</b> ISO3745 / ISO 3743-1
<b>Evaporating Temp. :</b> 0.00 °C <b>Superheat :</b> 6.50 K <b>Return gas temp. :</b> 0.00 °C <b>Condensing Temp. :</b> 45.0 °C <b>Subcooling :</b> 20.2 K <b>Liquid :</b> 24.5 °C	<b>Refrig. Capacity :</b> 9164 Watt  <b>Power Input :</b> 2815 Watt <b>Amps :</b> 5.19 A <b>C.O.P :</b> 3.26 Watt/W	76 dBA



<b>Displacement (cc)</b>	63
<b>Net Weight (Kg)</b>	31.0
<b>Oil Quantity (cc)</b>	1140.0
<b>Oil Type</b>	Polyolester
<b>Expansion Device</b>	Capillary_Tube/Expansion_Valve
<b>Cooling</b>	Fan
<b>Main Winding (Ohm)</b>	3.95
<b>Current</b>	
RLA (A)	6.1   6.3
MCC (A)	8.9
LRA (A)	45
<b>Electrical Equipment</b>	TRI
<b>Overload</b>	Interne
<b>Refrigerating connection for</b>	
Suction Tube	22.2 (7/8")
Discharge Tube	12.7 (1/2")
Process Tube	6.35 (1/4")

Certificates :



Note : Tecumseh reserves the right to change information contained in this document without notification.



**Tecumseh**

<b>FH4538Z-XG</b>	<b>Tension XG : 380-420V 3~ 50Hz / 460V 3~ 60 Hz</b>
-------------------	--

Les performances sont données dans les **conditions EN12900** :  
 Condition Dew  
 The performance data are in **EN12900 conditions** :  
 Dew Condition

Gaz aspirés : 20.0 °C  
 Sous refroidissement : 0.0 K  
 Return gas : 20.0 °C  
 Subcooling : 0.0 K

© 2023 Tecumseh Products Company  
All rights reserved

**50 Hz R404A**

**N°User-324**

4   T condensation	5   T évaporation	(°C)	-25	-20	-15	-10	-5	0	5	10	15
<b>30</b>	1   P frigorifique	(Watt)	3096	4075	5218	6547	8088	9864	11900	14218	16844
	2   P absorbée	(W)	1545	1749	1934	2095	2224	2315	2363	2359	2298
	3   I absorbée	(A)	3.56	3.83	4.05	4.24	4.40	4.52	4.60	4.65	4.66
<b>40</b>	1   P frigorifique	(Watt)	2339	3242	4262	5422	6747	8261	9988	11950	14174
	2   P absorbée	(W)	1591	1841	2080	2301	2499	2666	2796	2884	2921
	3   I absorbée	(A)	3.52	3.89	4.21	4.50	4.76	4.98	5.16	5.31	5.42
<b>50</b>	1   P frigorifique	(Watt)		2366	3259	4246	5351	6598	8011	9614	11431
	2   P absorbée	(W)		1906	2189	2461	2717	2951	3155	3323	3449
	3   I absorbée	(A)		3.91	4.34	4.73	5.08	5.40	5.68	5.93	6.14
<b>60</b>	1   P frigorifique	(Watt)			2227	3036	3917	4893	5989	7228	8635
	2   P absorbée	(W)			2286	2600	2905	3195	3463	3702	3907
	3   I absorbée	(A)			4.43	4.92	5.37	5.79	6.17	6.51	6.83

**60 Hz R404A**

**N°User-324**

4   T condensation	5   T évaporation	(°C)	-25	-20	-15	-10	-5	0	5	10	15
<b>30</b>	1   P frigorifique	(Watt)	3672	4866	6218	7759	9519	11527	13814	16409	19343
	2   P absorbée	(W)	1835	2115	2360	2569	2743	2883	2990	3063	3103
	3   I absorbée	(A)	3.57	3.83	4.07	4.27	4.45	4.60	4.73	4.82	4.89
<b>40</b>	1   P frigorifique	(Watt)	2708	3825	5048	6408	7935	9658	11608	13814	16307
	2   P absorbée	(W)	1799	2150	2466	2748	2997	3213	3397	3549	3670
	3   I absorbée	(A)	3.54	3.88	4.20	4.48	4.75	4.98	5.19	5.37	5.52
<b>50</b>	1   P frigorifique	(Watt)		2763	3844	5010	6289	7713	9312	11115	13152
	2   P absorbée	(W)		2148	2528	2875	3191	3475	3729	3952	4145
	3   I absorbée	(A)		3.87	4.27	4.64	4.98	5.30	5.59	5.85	6.08
<b>60</b>	1   P frigorifique	(Watt)			2651	3607	4626	5737	6970	8356	9923
	2   P absorbée	(W)			2576	2981	3355	3700	4015	4301	4559
	3   I absorbée	(A)			4.28	4.73	5.16	5.56	5.93	6.28	6.59

1 = cooling capacity 2 = power input 3 = current 4 = condensing temperature 5 = evaporating temperature

**Nota : Tecumseh se réserve le droit de modifier les informations contenues dans ce document sans préavis.**

**Note : Tecumseh reserves the right to change information contained in this document without notification.**