



Compressor  
Voltage Code : XG

# FH4544Z-XG

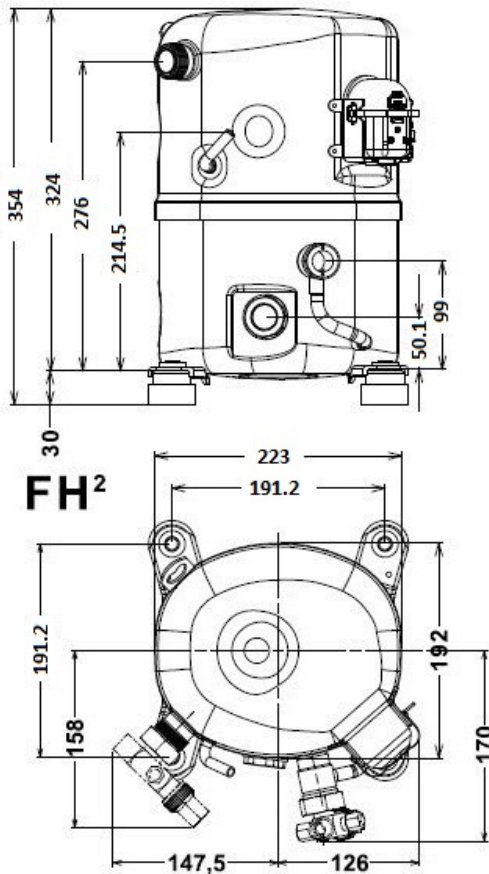
High Temp. Commercial (HP)

380-420V 3~ 50Hz / 460V 3~ 60 Hz

R404A

FH4544Z-XG1A

Operating conditions : <b>Customized... / 50 Hz / Dew</b>		<b>Sound Power</b> ISO3745 / ISO 3743-1
<b>Evaporating Temp. :</b> 0.00 °C <b>Superheat :</b> 6.50 K <b>Return gas temp. :</b> 0.00 °C <b>Condensing Temp. :</b> 45.0 °C <b>Subcooling :</b> 20.2 K <b>Liquid :</b> 24.5 °C	<b>Refrig. Capacity :</b> 10392 Watt  <b>Power Input :</b> 3397 Watt <b>Amps :</b> 5.83 A <b>C.O.P :</b> 3.06 Watt/W	77 dBA



<b>Displacement (cc)</b>	68
<b>Net Weight (Kg)</b>	31.0
<b>Oil Quantity (cc)</b>	1140.0
<b>Oil Type</b>	Polyolester
<b>Expansion Device</b>	Capillary_Tube/Expansion_Valve
<b>Cooling</b>	Fan
<b>Main Winding (Ohm)</b>	4.3
<b>Current</b>	
RLA (A)	6.7   6.6
MCC (A)	12
LRA (A)	42
<b>Electrical Equipment</b>	TRI
<b>Overload</b>	Interne
<b>Refrigerating connection for</b>	
Suction Tube	22.2 (7/8")
Discharge Tube	12.7 (1/2")
Process Tube	6.35 (1/4")

Certificates :



Note : Tecumseh reserves the right to change information contained in this document without notification.



**Tecumseh**

<b>FH4544Z-XG</b>	<b>Tension XG : 380-420V 3~ 50Hz / 460V 3~ 60 Hz</b>
-------------------	--

Les performances sont données dans les <b>conditions EN12900</b> :	Gaz aspirés :	20.0 °C
Condition Dew	Sous refroidissement :	0.0 K
The performance data are in <b>EN12900 conditions</b> :	Return gas :	20.0 °C
Dew Condition	Subcooling :	0.0 K

<b>50 Hz R404A</b>											
											<b>N°User-303</b>
4   T condensation	5   T évaporation	(°C)	<b>-25</b>	<b>-20</b>	<b>-15</b>	<b>-10</b>	<b>-5</b>	<b>0</b>	<b>5</b>	<b>10</b>	<b>15</b>
<b>30</b>	1   P frigorifique	(Watt)	3563	4720	6031	7526	9233	11181	13399	15917	18762
	2   P absorbée	(W)	1862	2145	2392	2604	2781	2923	3031	3105	3146
	3   I absorbée	(A)	4.06	4.35	4.61	4.84	5.04	5.21	5.35	5.46	5.54
<b>40</b>	1   P frigorifique	(Watt)	2628	3710	4897	6216	7697	9368	11260	13400	15817
	2   P absorbée	(W)	1825	2179	2499	2785	3038	3257	3444	3598	3720
	3   I absorbée	(A)	4.01	4.40	4.75	5.08	5.37	5.64	5.87	6.07	6.24
<b>50</b>	1   P frigorifique	(Watt)		2681	3729	4859	6100	7482	9032	10781	12757
	2   P absorbée	(W)		2178	2562	2915	3235	3523	3780	4006	4202
	3   I absorbée	(A)		4.38	4.83	5.25	5.64	6.00	6.33	6.63	6.89
<b>60</b>	1   P frigorifique	(Watt)			2572	3499	4487	5565	6761	8105	9625
	2   P absorbée	(W)			2612	3022	3401	3751	4070	4360	4622
	3   I absorbée	(A)			4.84	5.36	5.84	6.30	6.72	7.11	7.47

<b>60 Hz R404A</b>											
											<b>N°User-303</b>
4   T condensation	5   T évaporation	(°C)	<b>-25</b>	<b>-20</b>	<b>-15</b>	<b>-10</b>	<b>-5</b>	<b>0</b>	<b>5</b>	<b>10</b>	<b>15</b>
<b>30</b>	1   P frigorifique	(Watt)	4219	5588	7141	8910	10931	13238	15864	18845	22214
	2   P absorbée	(W)	2197	2531	2823	3073	3281	3449	3576	3664	3712
	3   I absorbée	(A)	3.91	4.20	4.45	4.67	4.86	5.03	5.16	5.27	5.35
<b>40</b>	1   P frigorifique	(Watt)	3112	4393	5798	7359	9113	11092	13331	15865	18727
	2   P absorbée	(W)	2153	2571	2949	3286	3584	3843	4063	4245	4389
	3   I absorbée	(A)	3.87	4.24	4.59	4.90	5.19	5.44	5.67	5.86	6.03
<b>50</b>	1   P frigorifique	(Watt)		3175	4415	5753	7223	8858	10694	12765	15104
	2   P absorbée	(W)		2569	3023	3439	3817	4157	4460	4727	4958
	3   I absorbée	(A)		4.23	4.66	5.07	5.45	5.79	6.11	6.40	6.65
<b>60</b>	1   P frigorifique	(Watt)			3045	4143	5313	6588	8005	9596	11396
	2   P absorbée	(W)			3082	3566	4013	4425	4802	5145	5453
	3   I absorbée	(A)			4.67	5.17	5.64	6.08	6.48	6.86	7.21

1 = cooling capacity 2 = power input 3 = current 4 = condensing temperature 5 = evaporating temperature

**Nota : Tecumseh se réserve le droit de modifier les informations contenues dans ce document sans préavis.**

**Note : Tecumseh reserves the right to change information contained in this document without notification.**

© 2023 Tecumseh Products Company  
All rights reserved