



Compressor
Voltage Code : XG

FH2480Z-XG

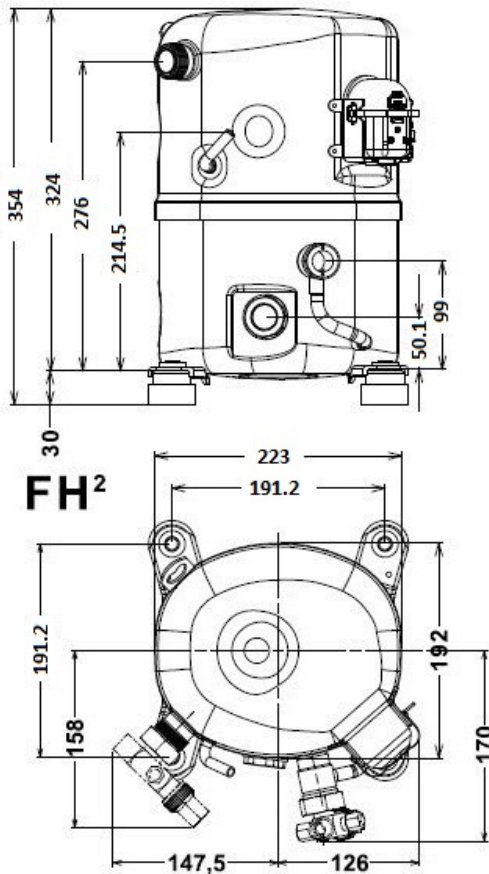
Low Temp. Commercial (BP)

380-420V 3~ 50Hz / 460V 3~ 60 Hz

R449A

FH2480Z-XG1A

Operating conditions :	Customized... / 50 Hz / Mid	Sound Power ISO3745 / ISO 3743-1
Evaporating Temp. : -25.0 °C Superheat : 6.50 K Return gas temp. : -22.9 °C Condensing Temp. : 45.0 °C Subcooling : 16.0 K Liquid : 24.5 °C	Refrig. Capacity : 2070 Watt Power Input : 1278 Watt Amps : 2.33 A C.O.P : 1.62 Watt/W	72 dBA



Displacement (cc)	54,3
Net Weight (Kg)	30.0
Oil Quantity (cc)	1140.0
Oil Type	Polyolester
Expansion Device	Capillary_Tube/Expansion_Valve
Cooling	Fan
Main Winding (Ohm)	5.32
Current	
RLA (A)	3.1 3.1
MCC (A)	6.4
LRA (A)	31
Electrical Equipment	TRI
Overload	Interne
Refrigerating connection for	
Suction Tube	15.9 (5/8")
Discharge Tube	12.7 (1/2")
Process Tube	6.35 (1/4")

Certificates :



Note : Tecumseh reserves the right to change information contained in this document without notification.



Tecumseh

FH2480Z-XG	Tension XG : 380-420V 3~ 50Hz / 460V 3~ 60 Hz
-------------------	--

Les performances sont données dans les conditions EN12900 :	Gaz aspirés :	20.0 °C
Condition Mid	Sous refroidissement :	0.0 K
The performance data are in EN12900 conditions :	Return gas :	20.0 °C
Mid Condition	Subcooling :	0.0 K

50 Hz R449A (*)								
N°User-215								
4 T condensation	5 T évaporation	(°C)	-35	-30	-25	-20	-15	-10
30	1 P frigorifique	(Watt)	1375	1961	2678	3545	4576	5787
	2 P absorbée	(W)	956	1140	1322	1496	1659	1806
	3 I absorbée	(A)	2.06	2.20	2.36	2.53	2.70	2.89
40	1 P frigorifique	(Watt)	1008	1526	2162	2933	3854	4942
	2 P absorbée	(W)	912	1135	1360	1584	1802	2011
	3 I absorbée	(A)	2.01	2.20	2.41	2.62	2.85	3.08
50	1 P frigorifique	(Watt)	648	1094	1644	2315	3123	4084
	2 P absorbée	(W)	817	1077	1346	1619	1893	2164
	3 I absorbée	(A)	1.88	2.13	2.39	2.66	2.93	3.21
60	1 P frigorifique	(Watt)			1142	1710	2401	3231
	2 P absorbée	(W)			1275	1597	1926	2258
	3 I absorbée	(A)			2.29	2.61	2.94	3.28

60 Hz R449A (*)								
N°User-215								
4 T condensation	5 T évaporation	(°C)	-35	-30	-25	-20	-15	-10
30	1 P frigorifique	(Watt)	1470	2096	2863	3789	4891	6186
	2 P absorbée	(W)	1063	1269	1471	1665	1846	2010
	3 I absorbée	(A)	2.01	2.16	2.31	2.47	2.64	2.83
40	1 P frigorifique	(Watt)	1078	1631	2311	3135	4120	5282
	2 P absorbée	(W)	1015	1263	1513	1762	2005	2238
	3 I absorbée	(A)	1.96	2.16	2.36	2.57	2.79	3.02
50	1 P frigorifique	(Watt)	692	1169	1757	2475	3338	4365
	2 P absorbée	(W)	909	1198	1498	1802	2107	2408
	3 I absorbée	(A)	1.84	2.09	2.34	2.60	2.87	3.14
60	1 P frigorifique	(Watt)			1221	1828	2567	3453
	2 P absorbée	(W)			1418	1777	2144	2512
	3 I absorbée	(A)			2.25	2.56	2.88	3.21

1 = cooling capacity 2 = power input 3 = current 4 = condensing temperature 5 = evaporating temperature

(*) Veuillez vous référer strictement aux Recommandations d'Utilisation et Bulletins Marketing Tecumseh du fait de la température de reflux élevée pour les applications LBP.
 (*) Due to very high discharge temperature especially on LBP conditions, please strictly refer to Tecumseh Guidelines & Marketing Bulletin when using this refrigerant.

Nota : Tecumseh se réserve le droit de modifier les informations contenues dans ce document sans préavis.
Note : Tecumseh reserves the right to change information contained in this document without notification.

© 2023 Tecumseh Products Company
All rights reserved