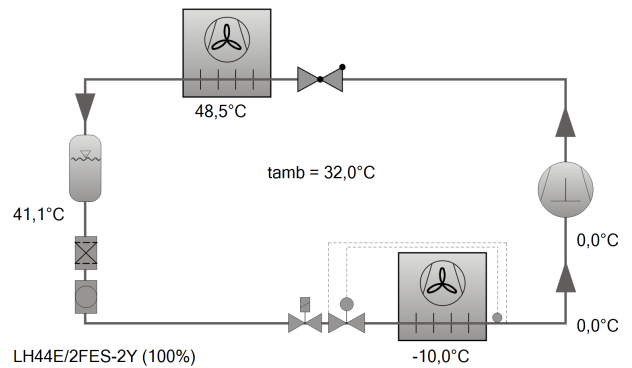




Selection: Condensing Units

Input Values

Unit type	LH44E/2FES-2Y
Series	Standard
Refrigerant	R449A
Reference temperature	Dew point temp.
Evaporating SST	-10,00 °C
Ambient temp.	32,0 °C
Suct. gas superheat	10,00 K
Useful superheat	100%
Operating mode	Auto
Power supply	400V-3-50Hz
Capacity control	100%



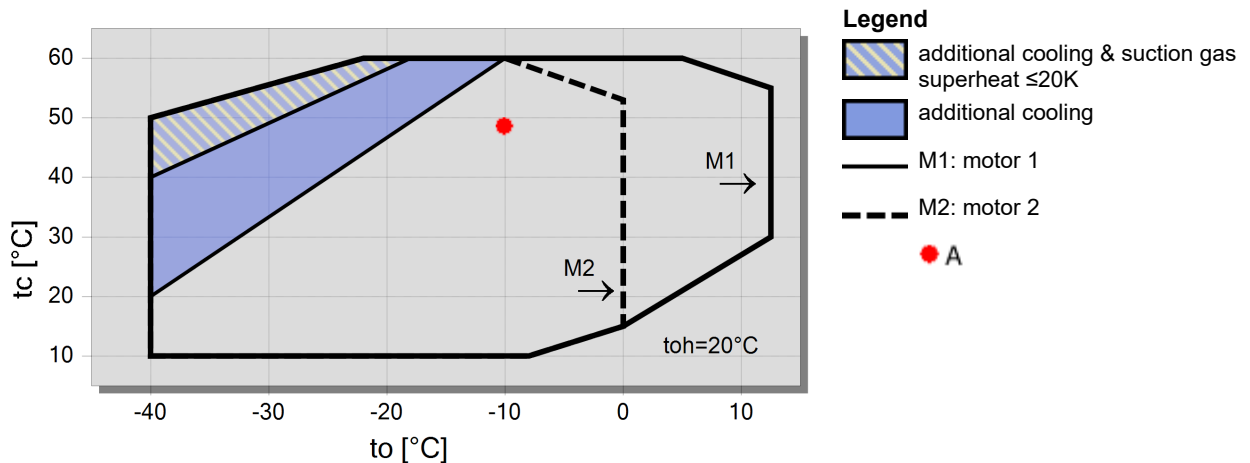
Result

Unit type	LH44E/2FES-2Y-40S
Capacity steps	100%
Cooling capacity	3,89 kW
Evaporator capacity	3,89 kW
Power input	2,28 kW
Current (400V)	3,95 A
Voltage range	380-420V
Mass flow	100,5 kg/h
Condensing SDT	48,5 °C
Liquid subcooling	3,00 K
Operating mode	Standard

Tentative Data.

Power input including fan power absorption

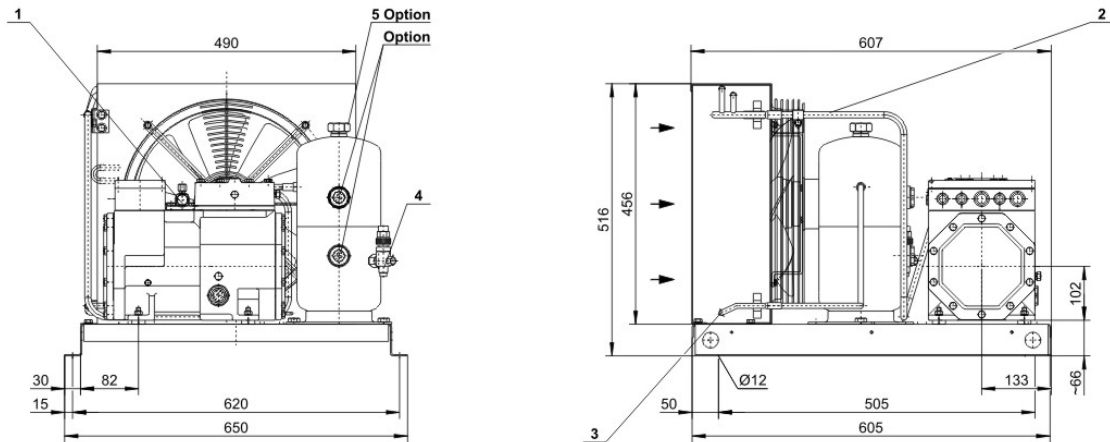
Application Limits 1 LH44E/2FES-2





Technical Data: LH44E/2FES-2Y

Dimensions and Connections



Technical Data

Technical Data

Weight	77 kg
Total width	650 mm
Total depth	607 mm
Total height	516 mm
Connection suction line	16 mm - 5/8"
Connection liquid line	10 mm - 3/8"
Voltage (50Hz, more on request)	230V-1-50Hz (Standard)
Current / Power consumption of each fan (50Hz)	1,4 A / 160 W
Air flow condenser 50Hz	2000 m ³ /h
Voltage (60Hz, more on request)	230V-1-60Hz (Standard)
Current / Power consumption of each fan (60Hz)	1,4 A / 155 W
Air flow condenser 60Hz	2000 m ³ /h
Coil Volume	0,46 dm ³

Extent of delivery (Standard)

Liquid receiver with shut-off valve	Standard
Discharge gas line	Standard
Fans: Number	1 x EC
Protective charge	Standard

Available Options

Condenser with improved corrosion protection, plastic coated fins or copper fins	Option
Oil separator with check valve	Option
Accessory pack (HP/LP switches, complete wiring, liquid line + filter drier + sight glass)	Option
Wiring of electrical components to terminal box or junction box	Option
Adjustable high and low pressure switch	Option
Speed control fan, control range high pressure	5 .. 15 bar // 8 .. 25 bar
Oil heater	Option
Check valve	Option
Connection for pressure relief valve	Option
Liquid receiver with larger volume	Option
Weather protection housing, mounting kit	Option

Sound measurement

Data of compressors: see compressor program

Max. refrigerant charge 90% at 20°C / 68°F

Receiver type (Standard)	FS56
R22	6,1 kg
R134a	6,2 kg
R407C	5,8 kg
R404A/R507A	5,4 kg
R407A	5,9 kg
R407F	5,7 kg
R448A	5,6 kg
R449A	5,6 kg



R450A	6 kg
R454C	5,4 kg
R455A	5,3 kg
R513A	6,2 kg
R1234yf	5,6 kg
R1234ze	5,9 kg
Receiver type (Option)	FS076
R22	8,5 kg
R134a	8,6 kg
R407C	8,1 kg
R404A/R507A	7,5 kg



Condensing Units

Motor 1 = e.g. LH..E/4TES-12 with 12 "HP", primary for air-conditioning (e.g. R22,R407C) and medium temperature application (e.g. R134a, R407F, R407A, R404A, R507A, R22) and air-conditioning with R134a at high ambient temperatures.

Motor 2 = e.g. LH..E/4TES-9 with 8 "HP", for medium and low temperature application (e.g. R134a, R407F, R407A, R404A, R507A, R22) and air-conditioning with R134a.

For more information concerning the application range use the "limits" button.

Operation modes for LH..E/4VES-7 to LH../6HE-28 with R22

CIC = liquid injection with low temperature application, suction gas cooled motor

Specifications for sound emission

The data are based on 50 Hz operation.

Soundpressure: Data are valid for free field conditions with a block-shaped reference area in a distance of 10m.

For further information see technical information for sound data.

Legend of connection positions according to "Dimensions":

- 1 Suction gas valve
- 2 Discharge gas line
- 3 Condensate line
- 4 Refrigerant outlet (liquid line)
- 5 Pressure relief valve connection
- 6 Liquid injection (operation without liquid subcooler and with thermostatic expansion valve)
- 7 Refrigerant inlet at liquid subcooler
- 8 Refrigerant outlet at liquid subcooler
- 9 Suction gas line
- 10 Sight glass
- 11 Load suspension points
- 12 Plug for screwed cable gland
- 13 Cable bushing (for cables \varnothing 9-17 mm) (only ECOLITE)

Dimensions can show tolerances according to EN ISO 13920-B.