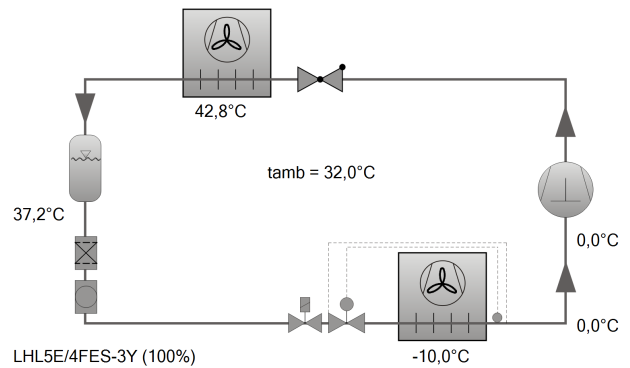




## Selection: Condensing Units

### Input Values

Unit type	LHL5E/4FES-3Y
Series	ECOLITE
Refrigerant	R449A
Reference temperature	Dew point temp.
Evaporating SST	-10,00 °C
Ambient temp.	32,0 °C
Suct. gas superheat	10,00 K
Useful superheat	100%
Operating mode	Auto
Power supply	400V-3-50Hz
Capacity control	100%



### Result

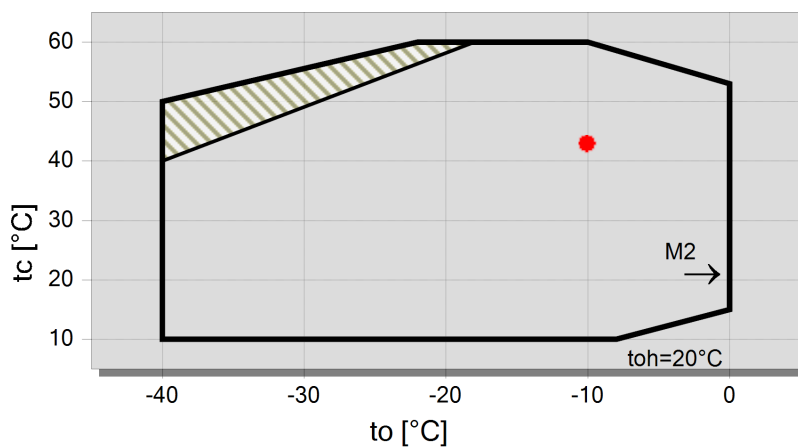
Unit type	<b>LHL5E/4FES-3Y-40S</b>
Capacity steps	100%
Cooling capacity	8,70 kW
Evaporator capacity	8,70 kW
Power input	3,92 kW
Current (400V)	6,77 A
Voltage range	380-420V
Mass flow	215 kg/h
Condensing SDT	42,8 °C
Liquid subcooling	1,00 K
Operating mode	Standard



### Tentative Data.

Power input including fan power absorption  
Performance data certified by ASERCOM (see T.Data/ Notes)

## Application Limits LHL5E/4FES-3



### Legend

suction gas superheat ≤20K

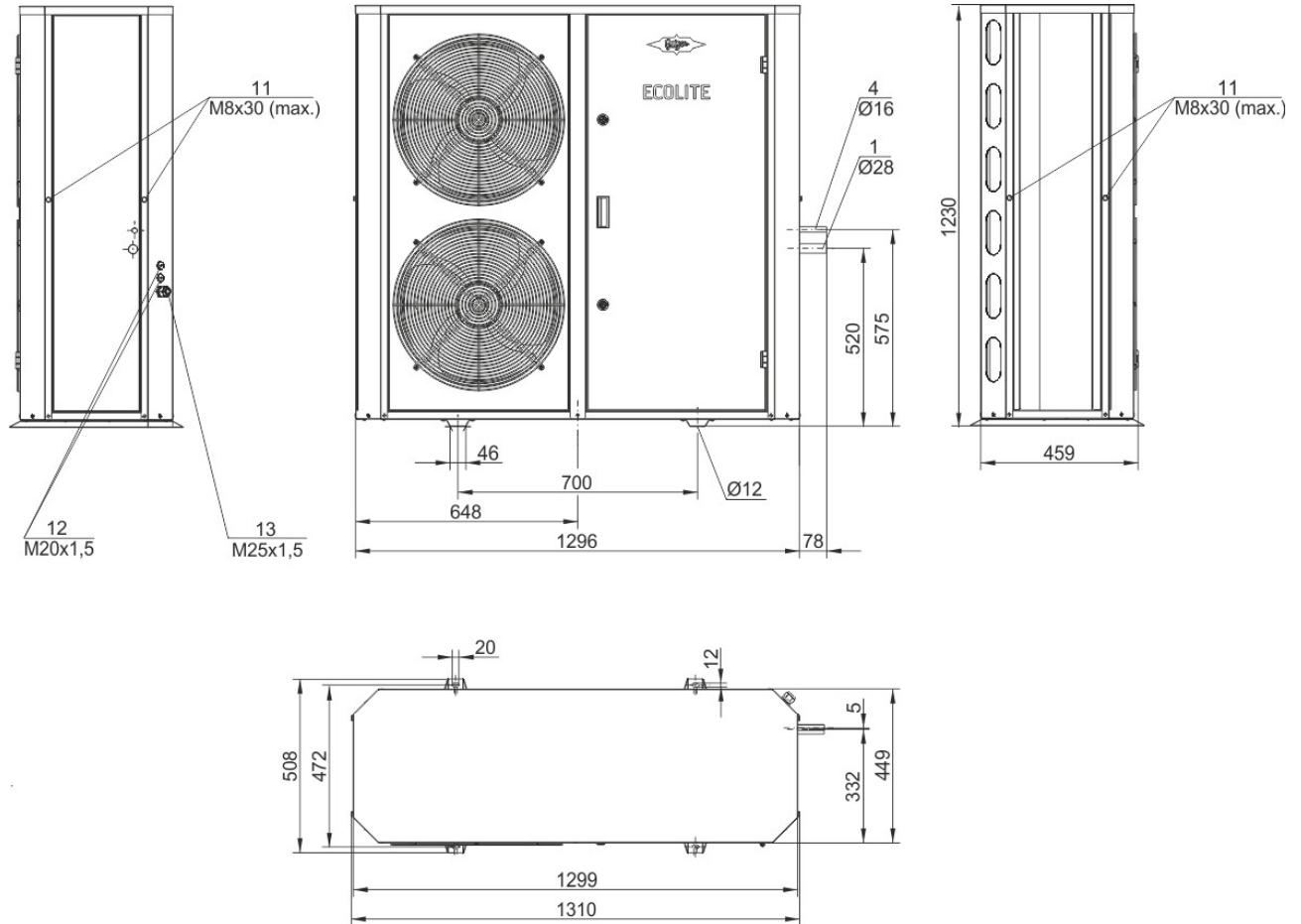
M2: motor 2

A



## Technical Data: LHL5E/4FES-3Y

### Dimensions and Connections



### Technical Data

#### Technical Data

Weight	210 kg
Total width	1300 mm
Total depth	450 mm
Total height	1230 mm
Connection suction line	28 mm - 1 1/8"
Connection liquid line	16 mm - 5/8"
Voltage (50Hz, more on request)	230V-1-50Hz (Standard)
Current / Power consumption of each fan (50Hz)	120 W
Air flow condenser 50Hz	6000 m <sup>3</sup> /h
Coil Volume	3,25 dm <sup>3</sup>

#### Extent of delivery (Standard)

ECOLITE controller with display	Standard
ECOLINE with VARISTEP (CR11)	100 .. 50 %
Liquid receiver with shut-off valve	Standard
Complete piping and wiring with main switch and compressor contactor	Standard
High & low pressure switch	Standard
High and low pressure transmitter	Standard
Sight glass and filter drier in liquid line	Standard
Oil heater	Standard
Discharge gas temperature sensor	Standard
suction gas temperature sensor	Standard
Ambient temperature sensor	Standard
Discharge gas line	Standard
Weather protective housing	Standard
Fans: elect. Speed regulator	Standard
Sound insulation for compressor housing	Standard
Additional cooling with EC fan	Standard



Fans: Number 2  
Protective charge Standard

**Available Options**

Second capacity regulator (CRII) 100-10 %  
Condenser with improved corrosion protection, plastic coated fins or copper fins Option  
Oil separator with check valve Option  
Adjustable high and low pressure switch Option  
Connection for heat recovery Option  
Oil level monitoring OLC-K1  
check valve for liquid line (additional pressure relief valve according to EN 378 required) Option  
Connection for pressure relief valve Option  
Cold store temperature sensor Option  
BEST interface converter Option

**Sound measurement**

Sound pressure in 10m (to=-10°C, tamb=32°C) 37,0 dB(A) @ 50Hz, R513A

Data of compressors: see compressor program

**Max. refrigerant charge 90% at 20°C / 68°F**

Receiver type (Standard) FS152E  
R22 16,3 kg  
R134a 16,5 kg  
R407C 15,6 kg  
R404A/R507A 14,4 kg  
R407A 15,8 kg  
R407F 15,4 kg  
R448A 15 kg  
R449A 15,1 kg  
R450A 16,1 kg  
R454C 14,3 kg  
R455A 14,2 kg  
R513A 16,5 kg  
R1234yf 15,0 kg  
R1234ze 15,9 kg



## Condensing Units

**Motor 1** = e.g. LH..E/4TES-12 with 12 "HP", primary for air-conditioning (e.g. R22,R407C) and medium temperature application (e.g. R134a, R407F, R407A, R404A, R507A, R22) and air-conditioning with R134a at high ambient temperatures.

**Motor 2** = e.g. LH..E/4TES-9 with 8 "HP", for medium and low temperature application (e.g. R134a, R407F, R407A, R404A, R507A, R22) and air-conditioning with R134a.

For more information concerning the application range use the "limits" button.

### Operation modes for LH..E/4VES-7 to LH../6HE-28 with R22

CIC = liquid injection with low temperature application, suction gas cooled motor

### Specifications for sound emission

The data are based on 50 Hz operation.

Soundpressure: Data are valid for free field conditions with a block-shaped reference area in a distance of 10m.

For further information see technical information for sound data.

### Legend of connection positions according to "Dimensions":

- 1 Suction gas valve
- 2 Discharge gas line
- 3 Condensate line
- 4 Refrigerant outlet (liquid line)
- 5 Pressure relief valve connection
- 6 Liquid injection (operation without liquid subcooler and with thermostatic expansion valve)
- 7 Refrigerant inlet at liquid subcooler
- 8 Refrigerant outlet at liquid subcooler
- 9 Suction gas line
- 10 Sight glass
- 11 Load suspension points
- 12 Plug for screwed cable gland
- 13 Cable bushing (for cables  $\varnothing$  9-17 mm) (only ECOLITE)

Dimensions can show tolerances according to EN ISO 13920-B.