



Compressor
Voltage Code : TZ

AG4546P-TZ

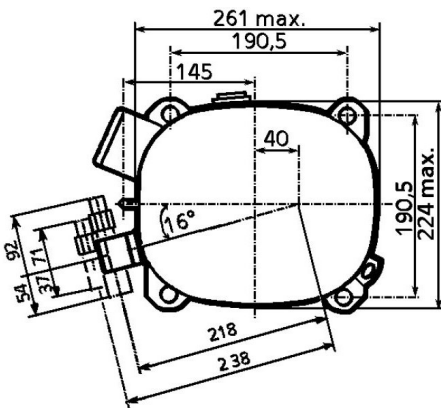
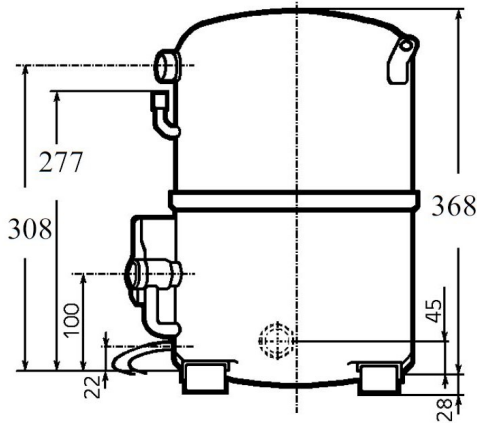
High Temp. Commercial (HP)

400V 3~ 50Hz / 440V 3~ 60 Hz

R404A

AG4546P-TZ1A

Operating conditions :	Customized... / 50 Hz / Dew	Sound Power ISO3745 / ISO 3743-1
Evaporating Temp. : -10.0 °C Superheat : 10.0 K Return gas temp. : 0.00 °C Condensing Temp. : 45.0 °C Subcooling : 3.00 K Liquid : 41.7 °C	Refrig. Capacity : 5086 Watt Power Input : 2949 Watt Amps : 5.38 A C.O.P : 1.72 Watt/W	83 dBA



Displacement (cc)	90,2
Net Weight (Kg)	43.0
Oil Quantity (cc)	1760.0
Oil Type	Polyolester
Expansion Device	Capillary_Tube/Expansion_Valve
Cooling	Fan
Main Winding (Ohm)	4.3
Current	
RLA (A)	7,2 8
MCC (A)	13,3 12,3
LRA (A)	43 43
Electrical Equipment	TRI
Overload	Interne
Refrigerating connection for	
Suction Tube	22,2 (7/8")
Discharge Tube	15,9 (5/8")
Process Tube	6,35 (1/4")

Certificates :

Note : Tecumseh reserves the right to change information contained in this document without notification.



Tecumseh

AG4546P-TZ	Tension TZ : 400V 3~ 50Hz / 440V 3~ 60 Hz
-------------------	--

Les performances sont données dans les conditions EN12900 :	Gaz aspirés :	20.0 °C
Condition Dew	Sous refroidissement :	0.0 K
The performance data are in EN12900 conditions :	Return gas :	20.0 °C
Dew Condition	Subcooling :	0.0 K

50 Hz R404A											
											N°3576
4 T condensation	5 T évaporation	(°C)	-25	-20	-15	-10	-5	0	5	10	15
30	1 P frigorifique	(Watt)	3296	4578	6126	7972	10149	12690	15628	18995	22823
	2 P absorbée	(W)	1863	2196	2500	2781	3042	3289	3525	3757	3988
	3 I absorbée	(A)	3.97	4.39	4.80	5.18	5.55	5.91	6.24	6.56	6.87
40	1 P frigorifique	(Watt)	2273	3394	4721	6287	8125	10267	12746	15595	18846
	2 P absorbée	(W)	1742	2168	2558	2916	3247	3555	3846	4124	4394
	3 I absorbée	(A)	3.82	4.35	4.86	5.35	5.83	6.29	6.73	7.16	7.57
50	1 P frigorifique	(Watt)		2273	3370	4646	6134	7867	9878	12198	14861
	2 P absorbée	(W)		2003	2497	2951	3371	3761	4125	4469	4797
	3 I absorbée	(A)		4.16	4.78	5.37	5.96	6.52	7.07	7.60	8.12
60	1 P frigorifique	(Watt)			2133	3109	4238	5552	7084	8866	10931
	2 P absorbée	(W)			2275	2846	3374	3864	4321	4749	5154
	3 I absorbée	(A)			4.54	5.25	5.94	6.61	7.27	7.90	8.53

60 Hz R404A											
											N°3576
4 T condensation	5 T évaporation	(°C)	-25	-20	-15	-10	-5	0	5	10	15
30	1 P frigorifique	(Watt)	4063	5707	7617	9828	12377	15298	18628	22403	26659
	2 P absorbée	(W)	2302	2762	3192	3592	3960	4298	4603	4876	5116
	3 I absorbée	(A)	4.37	4.83	5.28	5.70	6.11	6.50	6.87	7.22	7.55
40	1 P frigorifique	(Watt)	2641	4159	5864	7793	9980	12461	15274	18453	22034
	2 P absorbée	(W)	2084	2643	3174	3675	4146	4585	4994	5370	5715
	3 I absorbée	(A)	4.21	4.79	5.35	5.89	6.41	6.92	7.41	7.87	8.32
50	1 P frigorifique	(Watt)		2560	4064	5713	7542	9588	11886	14472	17382
	2 P absorbée	(W)		2379	3015	3622	4199	4746	5263	5748	6201
	3 I absorbée	(A)		4.57	5.25	5.91	6.55	7.18	7.78	8.37	8.93
60	1 P frigorifique	(Watt)			2268	3641	5115	6728	8515	10512	12754
	2 P absorbée	(W)			2707	3425	4114	4774	5403	6001	6569
	3 I absorbée	(A)			5.00	5.77	6.53	7.27	7.99	8.69	9.38

1 = cooling capacity 2 = power input 3 = current 4 = condensing temperature 5 = evaporating temperature

Nota : Tecumseh se réserve le droit de modifier les informations contenues dans ce document sans préavis.

Note : Tecumseh reserves the right to change information contained in this document without notification.

© 2024 Tecumseh Products Company
All rights reserved