



Compressor
Voltage Code : FZ

AJ4519P-FZ

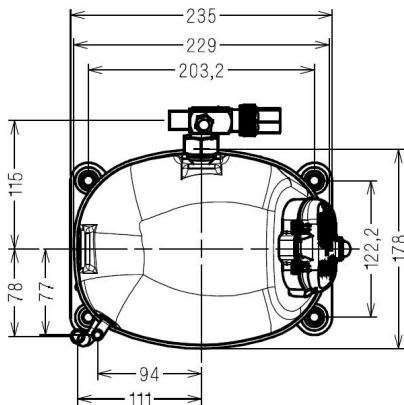
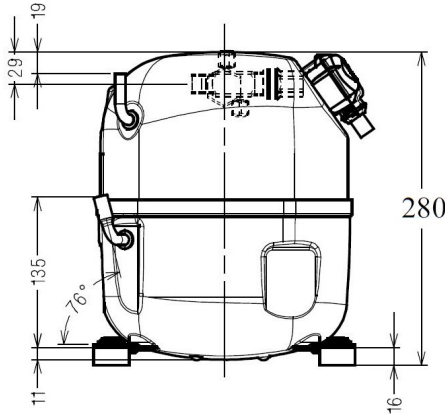
High Temp. Commercial (HP)

220 - 240V 1~ 50 Hz

R404A

AJ4519P-FZ3A

Operating conditions :	Customized... / 50 Hz / Dew	Sound Power ISO3745 / ISO 3743-1
Evaporating Temp. : -10.0 °C Superheat : 10.0 K Return gas temp. : 0.00 °C Condensing Temp. : 45.0 °C Subcooling : 3.00 K Liquid : 39.6 °C	Refrig. Capacity : 2425 Watt Power Input : 1490 Watt Amps : 7.62 A C.O.P : 1.63 Watt/W	68 dBA



Displacement (cc)	34,45
Net Weight (Kg)	22.2
Oil Quantity (cc)	475.0
Oil Type	Polyolester
Expansion Device	Capillary_Tube/Expansion_Valve
Cooling	Fan
Main Winding (Ohm)	1.3
Start Winding (Ohm)	5.9
Current	
RLA (A)	10,4
MCC (A)	16,8
LRA (A)	48
Electrical Equipment	CSR
Overload	T0770
Time Check	2.8s - 5.2s / 48.5 A
Open Temp	135° C
Close Temp	61° C
Optional	MST00AEW
Start Capacitor	100 µF / 250 V
Run Capacitor	25 µF / 400 V
Potential Relay	RVA6M**
Pick Up	239/268V
Drop Out	60/135V
Refrigerating connection for	
Suction Tube	15.9 (5/8")
Discharge Tube	9.5 (3/8")
Process Tube	6.35 (1/4")

Certificates :

Note : Tecumseh reserves the right to change information contained in this document without notification.



Tecumseh

AJ4519P-FZ	Tension FZ : 220 - 240V 1~ 50 Hz
-------------------	---

Les performances sont données dans les **conditions EN12900** :
 Condition Dew
 The performance data are in **EN12900 conditions** :
 Dew Condition

Gaz aspirés : 20.0 °C
 Sous refroidissement : 0.0 K
 Return gas : 20.0 °C
 Subcooling : 0.0 K

50 Hz R404A											
											N°3623
4 T condensation	5 T évaporation	(°C)	-25	-20	-15	-10	-5	0	5	10	15
30	1 P frigorifique	(Watt)	1669	2186	2778	3457	4237	5130	6149	7307	8616
	2 P absorbée	(W)	1000	1116	1223	1319	1405	1479	1541	1590	1626
	3 I absorbée	(A)	5.48	5.93	6.37	6.78	7.16	7.52	7.86	8.17	8.46
40	1 P frigorifique	(Watt)	1295	1774	2304	2899	3571	4334	5199	6181	7291
	2 P absorbée	(W)	1038	1176	1310	1439	1562	1679	1789	1891	1985
	3 I absorbée	(A)	5.55	6.18	6.78	7.36	7.91	8.44	8.94	9.42	9.87
50	1 P frigorifique	(Watt)		1345	1802	2301	2855	3476	4177	4971	5871
	2 P absorbée	(W)		1232	1386	1540	1693	1845	1996	2144	2289
	3 I absorbée	(A)		6.35	7.11	7.86	8.58	9.27	9.94	10.6	11.2
60	1 P frigorifique	(Watt)			1303	1695	2119	2587	3112	3708	4387
	2 P absorbée	(W)			1481	1653	1830	2010	2194	2381	2569
	3 I absorbée	(A)			7.37	8.28	9.17	10.0	10.9	11.7	12.5

© 2024 Tecumseh Products Company
All rights reserved

1 = cooling capacity 2 = power input 3 = current 4 = condensing temperature 5 = evaporating temperature

Nota : Tecumseh se réserve le droit de modifier les informations contenues dans ce document sans préavis.
Note : Tecumseh reserves the right to change information contained in this document without notification.